

Habitat Connectivity Mapping

The following maps have been created by Surrey Wildlife Trust Nature-based Solutions team as part of the Heathland Connections project* for Ewshot Parish Council:

- **Habitat map** (all broad habitat types, excluding scrub and urban)
- **Heathland map**
- **Grassland plus arable habitat map**
- **Woodland map**
- **Rivers, Freshwater and Floodplains map**
- **B-lines map** - *B-Lines were created by Buglife and are a series of 'insect pathways' running through our countryside and urban areas. They link together existing wildlife areas by creating and restoring a series of wildflower-rich habitat stepping stones.*
<https://www.buglife.org.uk/our-work/b-lines/>. The majority of Ewshot Parish falls within a B-Line and can contribute to the national vision of a network of flower-rich pathways to benefit pollinators, other wildlife and people.
- **Statutory designations map** - *In addition to your SSSI and SPAs, you also have a few designated Sites of Importance for Nature Conservation (SINCs) in the parish. This is a non-statutory designation given to sites that have been identified locally for their conservation value (in Surrey they are called Site of Nature Conservation Importance – SNCIs). You can find out more about this designation here:*
<https://www.hants.gov.uk/landplanningandenvironment/environment/biodiversity/informationcentre/sincs>. To enquire about the SINCs within the parish, you can contact the Hampshire Biodiversity Information Centre:
<https://www.hants.gov.uk/landplanningandenvironment/environment/biodiversity/informationcentre>.
- **Special Protected Areas (SPA) map**

The following data sources were used to obtain this information:

- UKCEH Land Cover Mapping (LCM) (2021) - <https://www.ceh.ac.uk/data/ukceh-landcover-maps>
- Priority Habitats Inventory – <https://naturalenglanddefra.opendata.arcgis.com/maps/Defra::priority-habitats-inventory-england/about>
- National Forest Inventory – <https://www.forestresearch.gov.uk/tools-andresources/national-forest-inventory/>
- Ancient Woodland Inventory – <https://naturalenglanddefra.opendata.arcgis.com/datasets/ancient-woodland-england/explore>
- OS Open Rivers - <https://www.arcgis.com/home/item.html?id=6048e8a5e29b49b093e79f08c732f109>
- Buglife B-lines map - <https://www.buglife.org.uk/our-work/b-lines/>
- Sites of Special Scientific Interest (SSSIs) - <https://naturalenglanddefra.opendata.arcgis.com/datasets/Defra::sites-of-special-scientific-interest-unitsengland/about>

*Heathland Connections is a Natural England funded, partnership-led initiative, which will deliver habitat restoration by supporting landowners to effectively manage adjoining areas of remnant heathland under their care. Find out more [here](#).

- Special Protection Areas (SPAs) - <https://naturalengland-defra.opendata.arcgis.com/datasets/Defra::special-protection-areas-england/explore>
- The maps were produced using Land App - <https://thelandapp.com/>

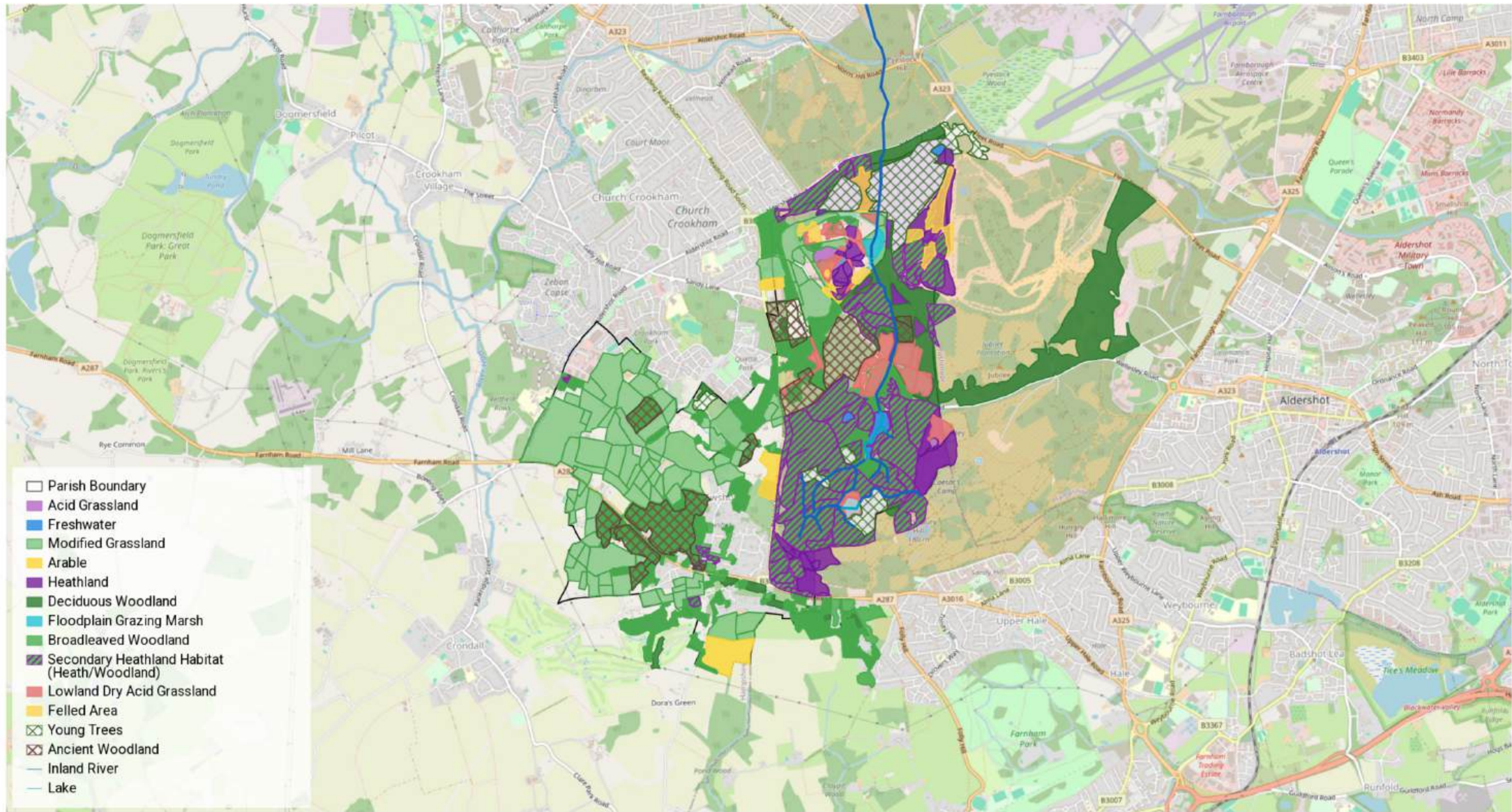
Please be aware that these habitat maps are intended to provide an indicative overview. They are best-guess datasets and are therefore not 100% accurate or up to date. This is due to limitations with the datasets themselves and our own limitations in being able to access or obtain licenses for more accurate/current data. However, they should provide a good visual guide for what habitats are present across the parish and where the gaps are, indicating where the opportunities lie for improving connectivity between different habitat types.

Please note that the advice given is based on the current accepted guidance and government regulations.

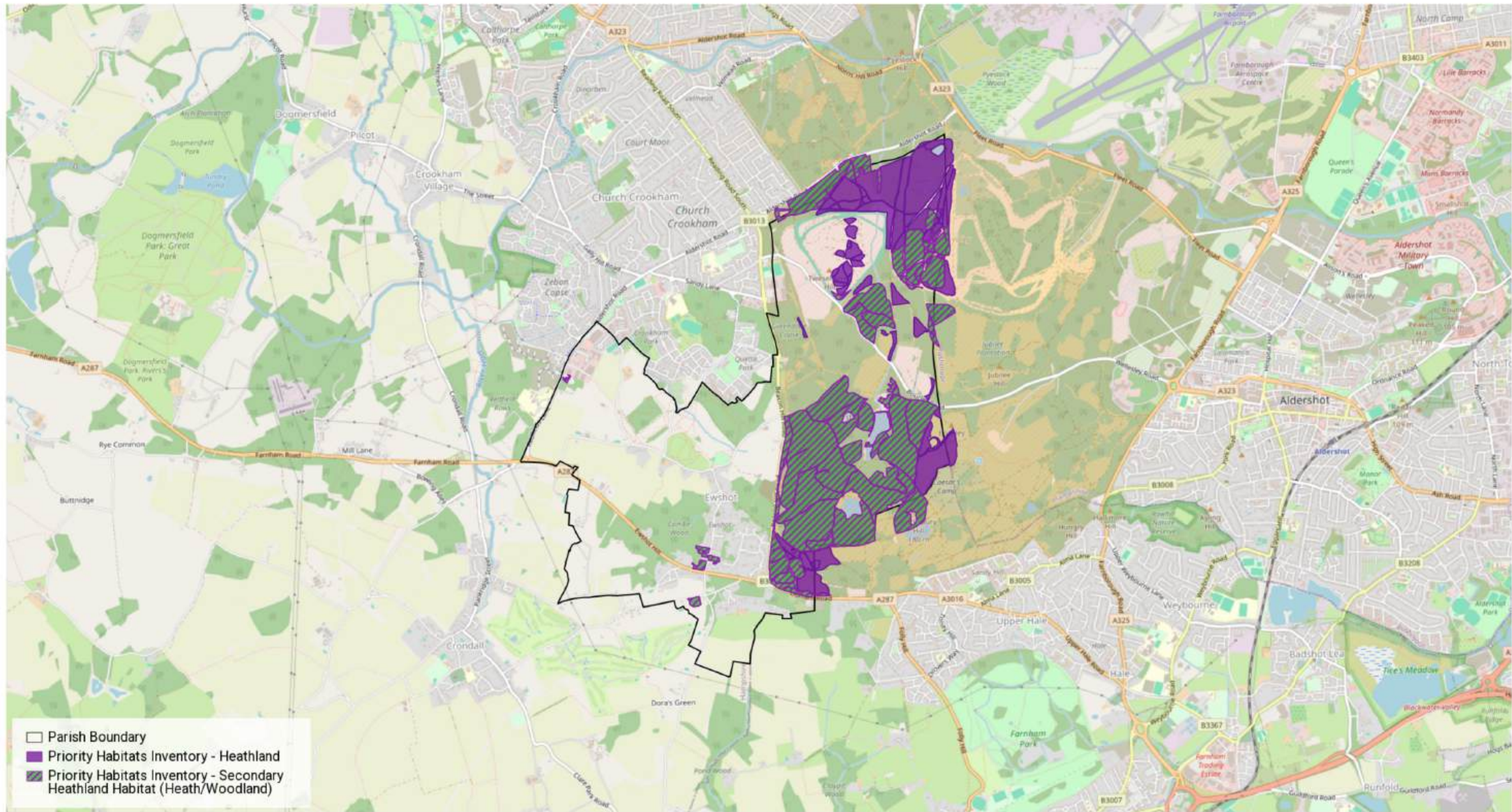
We cannot guarantee a certain outcome based on the advice provided. These are recommendations only.

Separate expert financial advice should be sought over matters relating to grants and funding option.

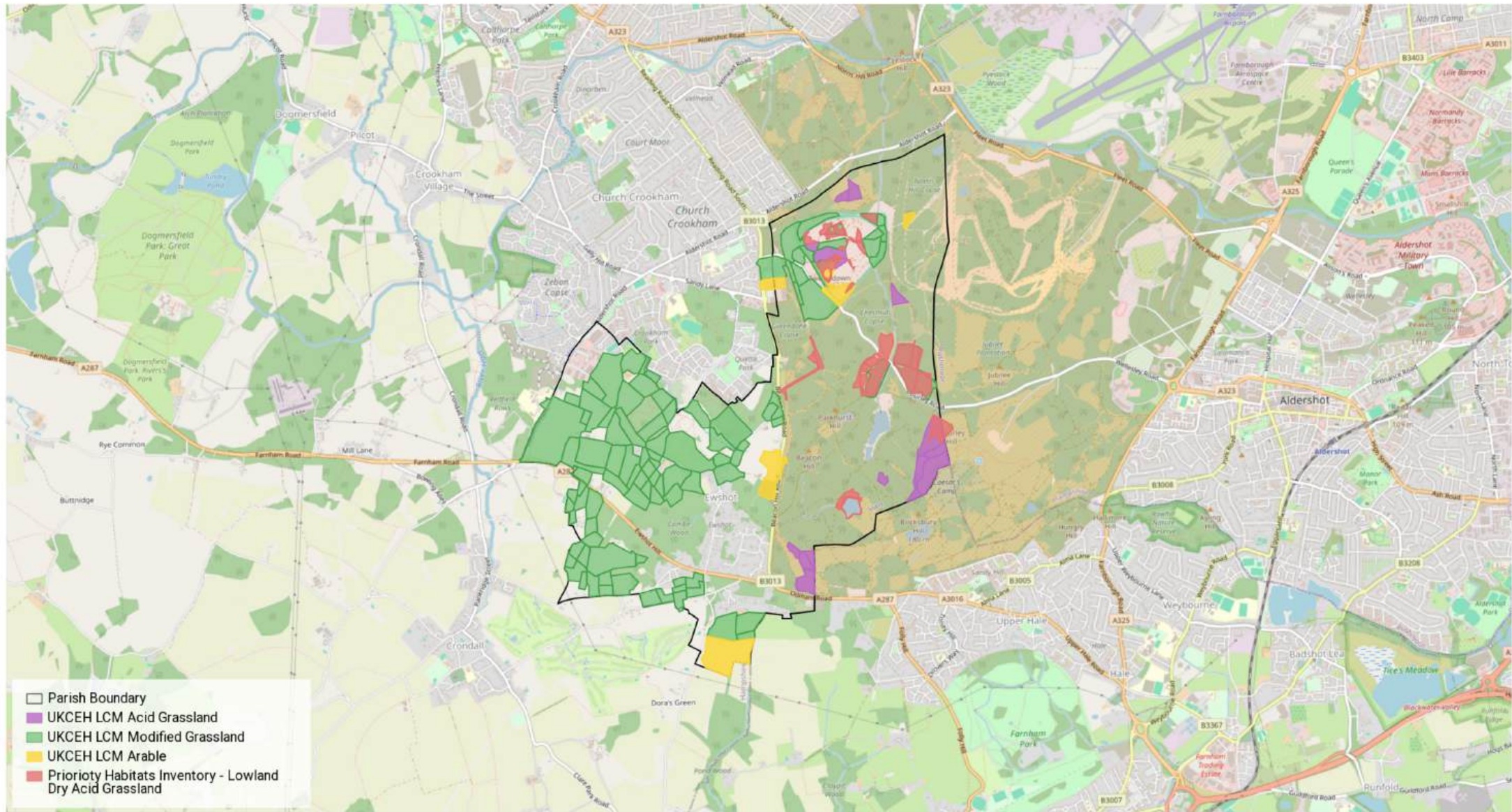
Habitats map - Ewshot Parish

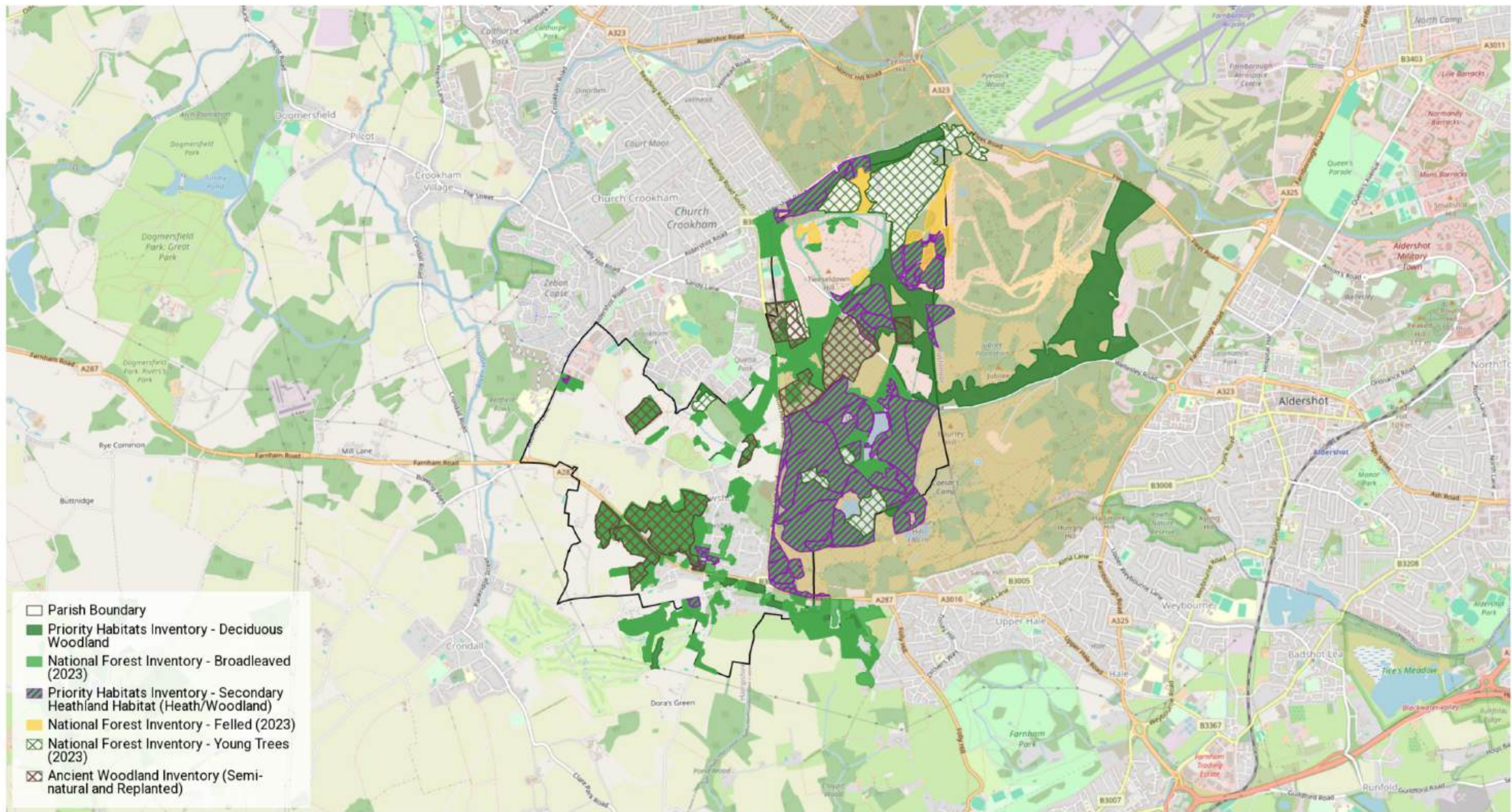


Heathland map - Ewshot Parish

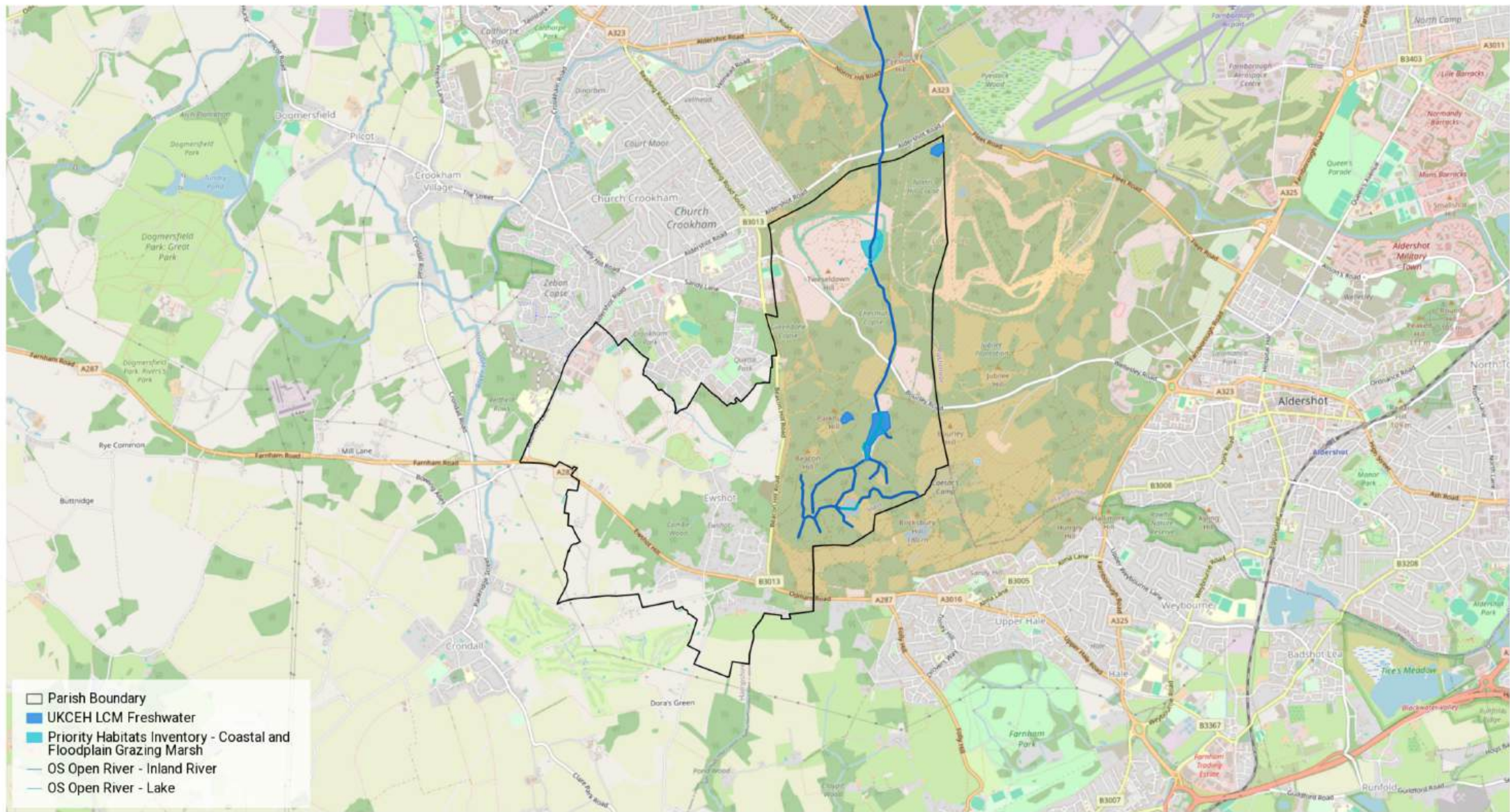


Grassland map - Ewshot Parish

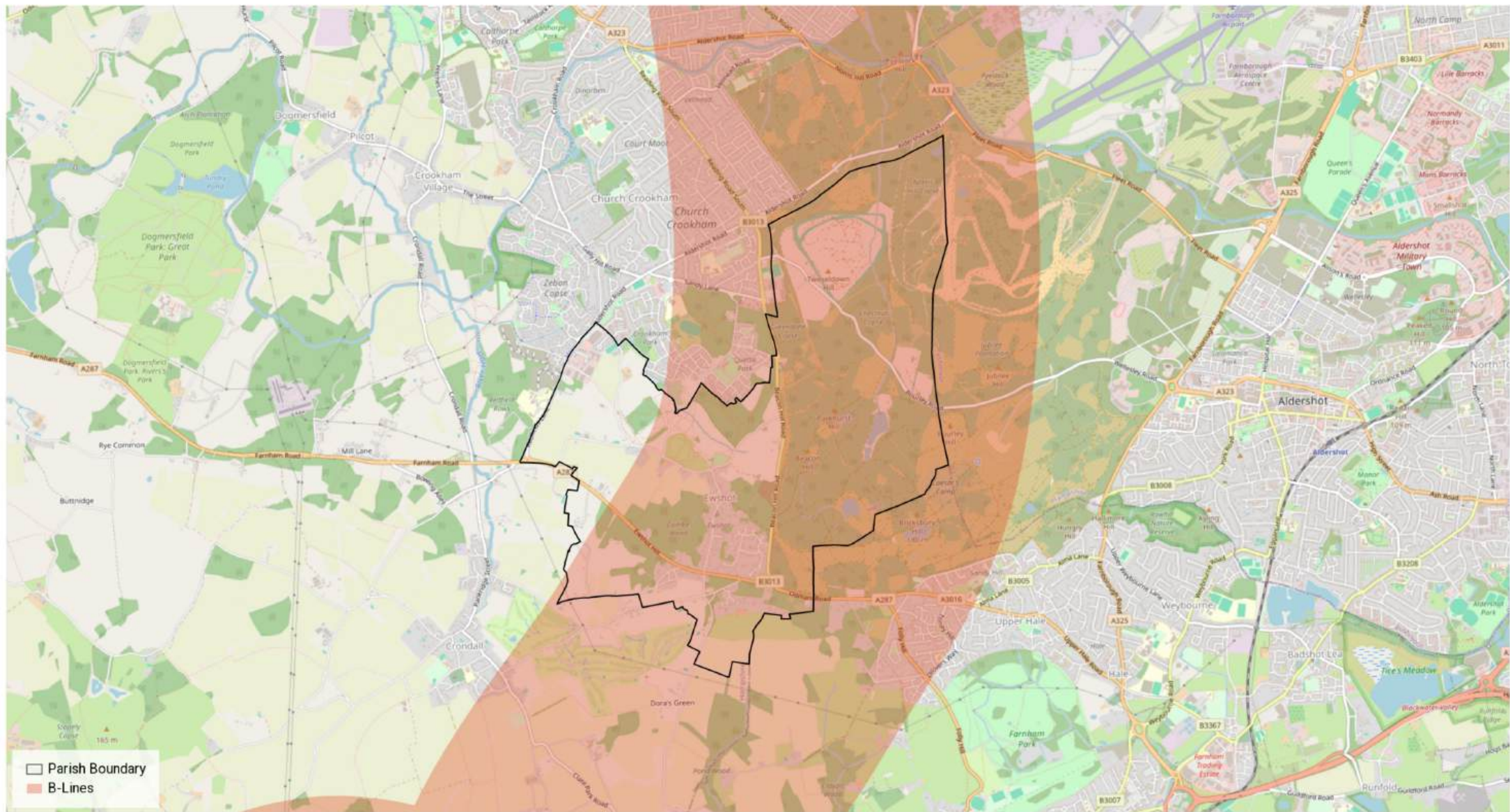




Rivers, Freshwater & Floodplains map - Ewshot Parish



B-lines map - Ewshot Parish



Designations - Ewshot Parish

